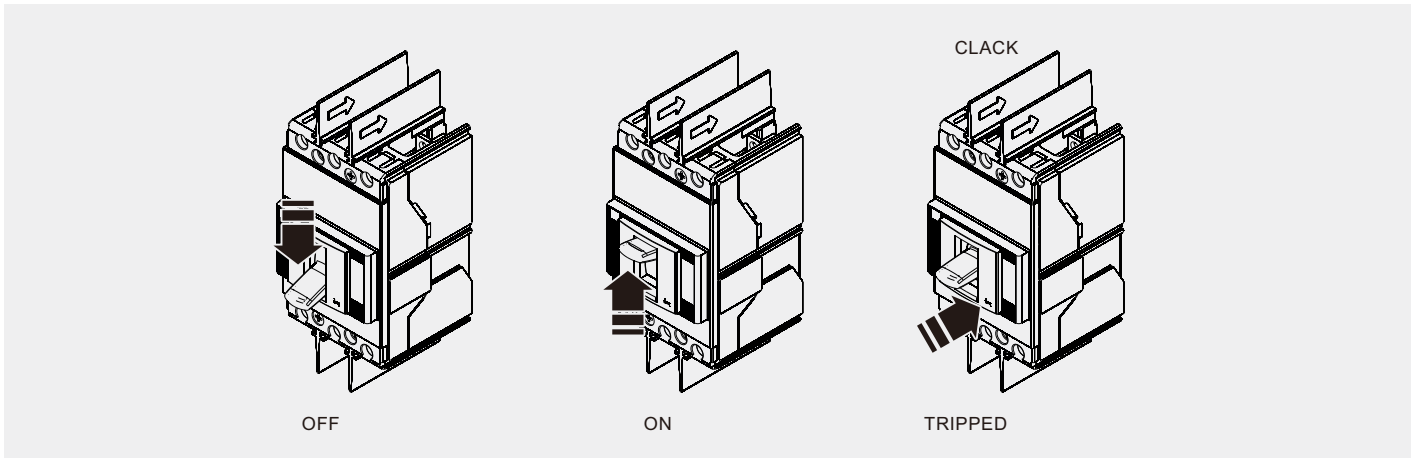


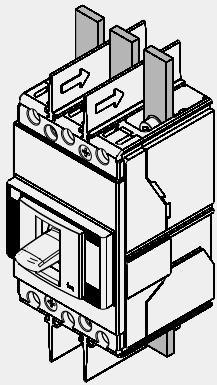
SACE Tmax XT

Istruzioni di installazione XT1
Installation instructions XT1
Installationsanleitung XT1
Instructions pour l'installation XT1
Instrucciones de instalación XT1
安装说明书 XT1

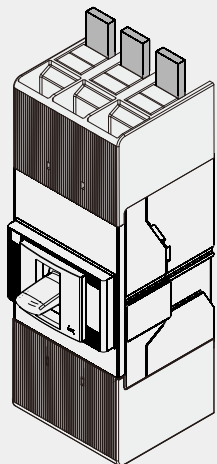
XT1 3p-4p



1



Usare cavi o barre isolate/ o eseguire prove di tipo specifiche sull' installazione.
Use cable or insulated busbars/ or performspecific type test on the installation.
Kabel oder isolierte Sammelschienen verwenden / oderdie spezifische Typprüfung
auf derInstallation durchführen.
Utiliser un câble ou des barres isolées/ ou réaliserun test de type spécifique sur installation.
Utilizar un cable o barras aisladas / o efectuaruna prueba de tipo específico sobre instalación.
使用电缆或经绝缘处理的母排， 否则需对安装进行指定的型式试验



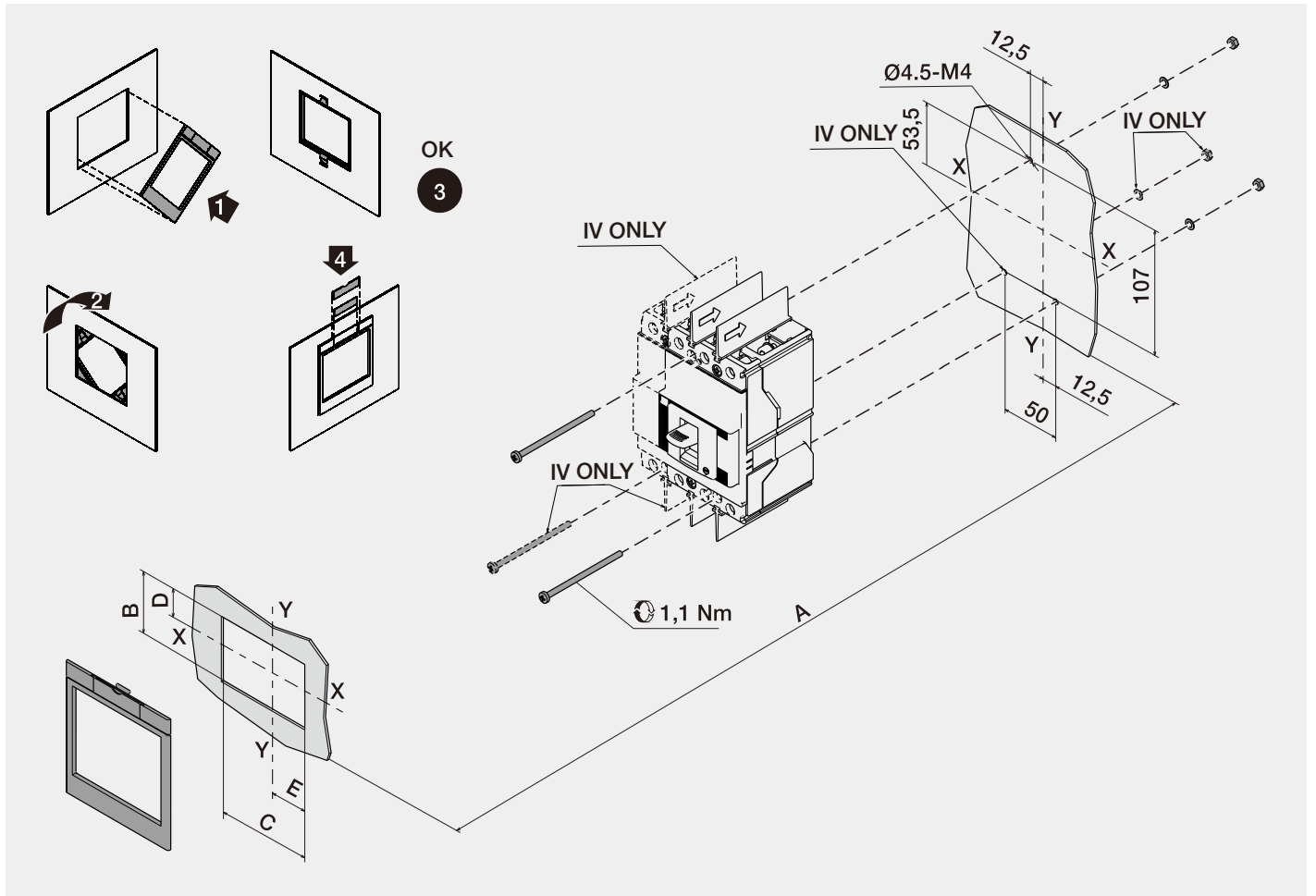
L'utilizzo di barre non isolate con $U_e \leq 480V$ prevede il montaggio obbligatorio di copriterminali HTC.
The use of not insulated busbars with $U_e \leq 480V$ involves the mandatory assembly of terminal-covers HTC.
Die Benutzung vor Schienen nicht isolierten mit $U_e \leq 480V$ sieht Die obligatorisch Montage von
Klemmenabdeckung HTC.
L'utilisation de barres non isolées avec $U_e \leq 480V$ prévoit le montage obligatoire du cache-bornes HTC.
La utilización de barras no aisladas con $U_e \leq 480V$ prevé el montaje obligatorio de cubre-bornes HTC.
使用不绝缘母线必须安装高端子盖板HTC。

Technical drawing of a door handle assembly. It shows a handle with a diameter of 3.5mm and a length of 14mm. The handle is mounted on a 4.6mm thick H-shape. The H-shape has a length of 73mm and an M4 thread. The handle is secured with a CH 5 screw (14mm length, M6 thread) and a CH 7 screw (16mm length, M4 thread). The handle is also secured with a CH 7 screw (M4 thread) and a CH 7 screw (M4 thread). The handle is secured with a CH 7 screw (M4 thread) and a CH 7 screw (M4 thread).

	III	IV	LENGHT		M	x4	x6	x8	-	-	-	-
			M	M								
F	III	IV	x2	x3	M4	x4	x6	x8	-	-	-	-
	III	IV	x2	x3	M4	x4	-	-	x4	x4	x8	x4

Technical drawing of a door handle assembly. It shows a handle with a diameter of 3.5mm and a length of 14mm. The handle is mounted on a 4.6mm thick H-shape. The H-shape has a length of 73mm and an M4 thread. The handle is secured with a CH 5 screw (14mm length, M6 thread) and a CH 7 screw (16mm length, M4 thread). The handle is also secured with a CH 7 screw (M4 thread) and a CH 7 screw (M4 thread). The handle is secured with a CH 7 screw (M4 thread) and a CH 7 screw (M4 thread).

Technical drawing of a door handle assembly with dimensions and exploded views. The drawing shows the handle, the H-shape, and the screws. The handle has a diameter of 3.5mm and a length of 14mm. The H-shape has a thickness of 4.6mm and a length of 73mm. The handle is secured with a CH 5 screw (14mm length, M6 thread) and a CH 7 screw (16mm length, M4 thread). The handle is also secured with a CH 7 screw (M4 thread) and a CH 7 screw (M4 thread). The handle is secured with a CH 7 screw (M4 thread) and a CH 7 screw (M4 thread).

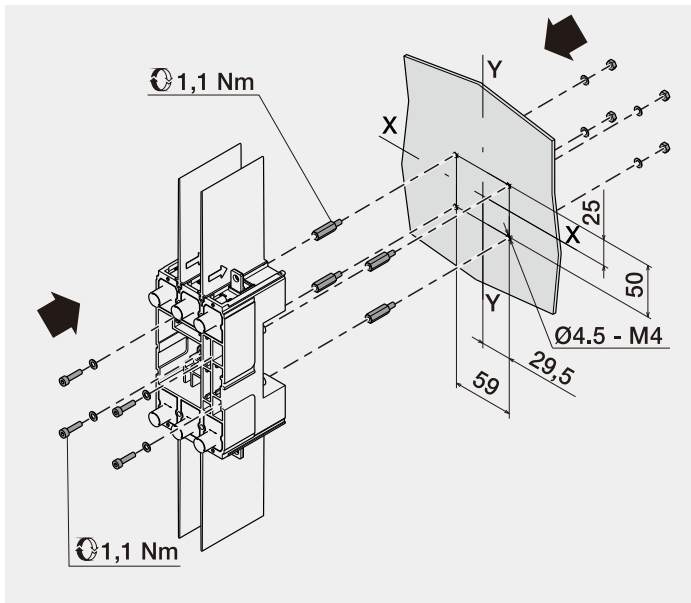


XT1 WITHOUT FLANGE SENZA MOSTRINA		A	B	C	D	E
	III-IV	79	43	47	15	23,5
	III	71	47	73	17	36,5
	IV	71	47	98	17	36,5

XT1 WITH FLANGE CON MOSTRINA		A	B	C	D	E
	III	74	55	81	21	40,5
	IV	74	55	106	21	40,5

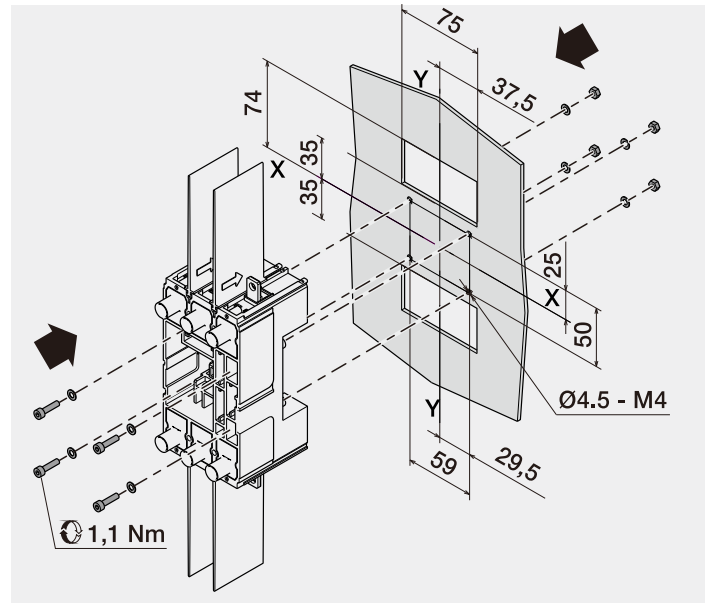
5

P Fixing at 70mm

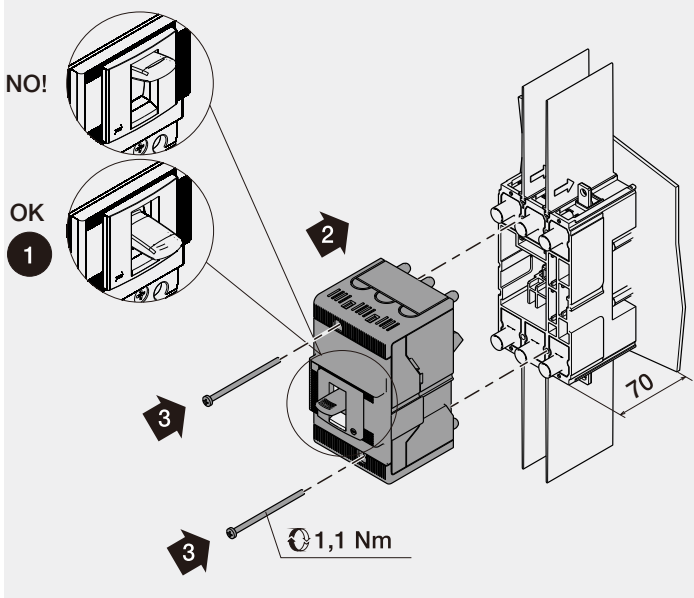


6

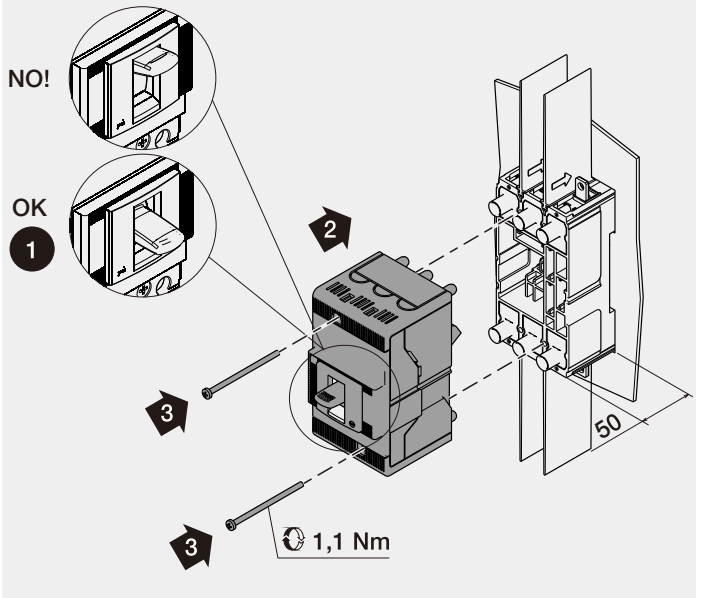
P Fixing at 50mm



7 P Fixing at 70mm

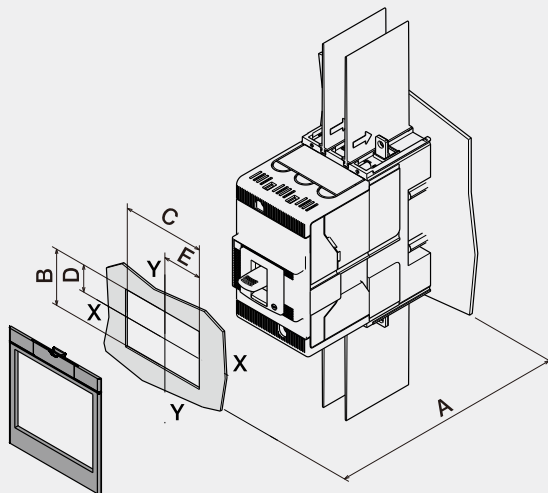


8 P Fixing at 50mm



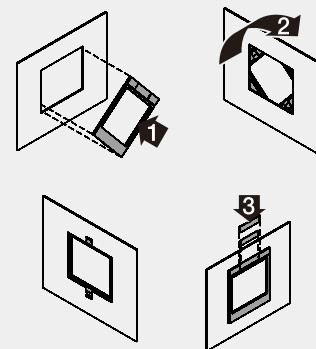
9

P



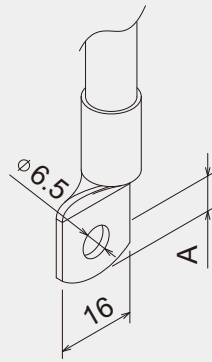
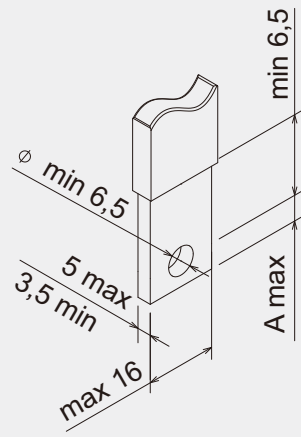
XT1 WITH FLANGE CON MOSTRINA		A		B	C	D	E
		50	70				
	III	124	144	55	81	21	40,5
	IV	124	144	55	106	21	40,5

XT1 WITHOUT FLANGE SENZA MOSTRINA		A		B	C	D	E
		50	70				
	III-IV	129	149	43	47	15	23,5
	III	121	141	47	73	17	36,5
	IV	121	141	47	98	17	36,5



Terminali Terminals Anschlusse Prises Terminales 端子类型	Codici Codes Codes Codes Códigos 物料编号	Istruzioni d'installazione Installation instructions Installationsanleitung Instructions pour l'installation Instrucciones de instalación 安装说明	Dimensioni di ingombro Overall dimensions Abmessungen Dimensions d'encombrement Dimensiones generales 全部尺寸				
F	<table border="1"><tr><td>1SDA066849R1</td><td>1/2 Kit - 3p</td></tr><tr><td>1SDA066850R1</td><td>1/2 Kit - 4p</td></tr></table>	1SDA066849R1	1/2 Kit - 3p	1SDA066850R1	1/2 Kit - 4p	1SDH000719R0811	1SDH000719R0100
1SDA066849R1	1/2 Kit - 3p						
1SDA066850R1	1/2 Kit - 4p						
EF	<table border="1"><tr><td>1SDA066865R1</td><td>1/2 Kit - 3p</td></tr><tr><td>1SDA066866R1</td><td>1/2 Kit - 4p</td></tr></table>	1SDA066865R1	1/2 Kit - 3p	1SDA066866R1	1/2 Kit - 4p	1SDH000719R0804	1SDH000719R0101
1SDA066865R1	1/2 Kit - 3p						
1SDA066866R1	1/2 Kit - 4p						
ES	<table border="1"><tr><td>1SDA066889R1</td><td>1/2 Kit - 3p</td></tr><tr><td>1SDA066890R1</td><td>1/2 Kit - 4p</td></tr></table>	1SDA066889R1	1/2 Kit - 3p	1SDA066890R1	1/2 Kit - 4p	1SDH000719R0805	1SDH000719R0123
1SDA066889R1	1/2 Kit - 3p						
1SDA066890R1	1/2 Kit - 4p						
FC Cu (MCCB)	<table border="1"><tr><td>1SDA066905R1</td><td>1/2 Kit - 3p</td></tr><tr><td>1SDA066906R1</td><td>1/2 Kit - 4p</td></tr></table>	1SDA066905R1	1/2 Kit - 3p	1SDA066906R1	1/2 Kit - 4p	1SDH000719R0807	1SDH000719R0103
1SDA066905R1	1/2 Kit - 3p						
1SDA066906R1	1/2 Kit - 4p						
FC Cu Al 1.5...70mm²	<table border="1"><tr><td>1SDA067151R1</td><td>1/2 Kit - 3p</td></tr><tr><td>1SDA067152R1</td><td>1/2 Kit - 4p</td></tr></table>	1SDA067151R1	1/2 Kit - 3p	1SDA067152R1	1/2 Kit - 4p	1SDH000719R0806	1SDH000719R0102
1SDA067151R1	1/2 Kit - 3p						
1SDA067152R1	1/2 Kit - 4p						
FC Cu Al 35...95mm²	<table border="1"><tr><td>1SDA067155R1</td><td>1/2 Kit - 3p</td></tr><tr><td>1SDA067156R1</td><td>1/2 Kit - 4p</td></tr></table>	1SDA067155R1	1/2 Kit - 3p	1SDA067156R1	1/2 Kit - 4p	1SDH000719R0816	1SDH000719R0126
1SDA067155R1	1/2 Kit - 3p						
1SDA067156R1	1/2 Kit - 4p						
FC Cu Al 120...240mm²	<table border="1"><tr><td>1SDA067159R1</td><td>1/2 Kit - 3p</td></tr><tr><td>1SDA067160R1</td><td>1/2 Kit - 4p</td></tr></table>	1SDA067159R1	1/2 Kit - 3p	1SDA067160R1	1/2 Kit - 4p	1SDH000719R0643	
1SDA067159R1	1/2 Kit - 3p						
1SDA067160R1	1/2 Kit - 4p						
MC Cu Al	<table border="1"><tr><td>1SDA066921R1</td><td>1/2 Kit - 3p</td></tr><tr><td>1SDA066922R1</td><td>1/2 Kit - 4p</td></tr></table>	1SDA066921R1	1/2 Kit - 3p	1SDA066922R1	1/2 Kit - 4p	1SDH000719R0808	1SDH000719R0124
1SDA066921R1	1/2 Kit - 3p						
1SDA066922R1	1/2 Kit - 4p						
R	<table border="1"><tr><td>1SDA066937R1</td><td>1/2 Kit - 3p</td></tr><tr><td>1SDA066938R1</td><td>1/2 Kit - 4p</td></tr></table>	1SDA066937R1	1/2 Kit - 3p	1SDA066938R1	1/2 Kit - 4p	1SDH000719R0809	1SDH000719R0104
1SDA066937R1	1/2 Kit - 3p						
1SDA066938R1	1/2 Kit - 4p						
R-RC	<table border="1"><tr><td>1SDA066953R1</td><td>1/2 Kit - 4p</td></tr></table>	1SDA066953R1	1/2 Kit - 4p	1SDH000719R0810	1SDH000719R0131		
1SDA066953R1	1/2 Kit - 4p						
FB	<table border="1"><tr><td>1SDA066957R1</td><td>1/2 Kit - 3p</td></tr><tr><td>1SDA066958R1</td><td>1/2 Kit - 4p</td></tr></table>	1SDA066957R1	1/2 Kit - 3p	1SDA066958R1	1/2 Kit - 4p	1SDH000719R0814	
1SDA066957R1	1/2 Kit - 3p						
1SDA066958R1	1/2 Kit - 4p						

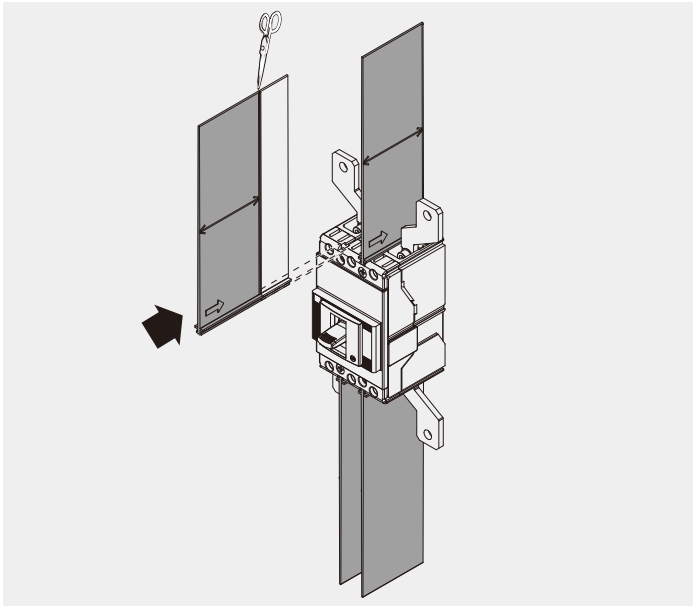
Terminali Terminals Anschlusse Prises Terminales 端子类型	Codici Codes Codes Codes Códigos 物料编号	Istruzioni d'installazione Installation instructions Installationsanleitung Instructions pour l'installation Instrucciones de instalación 安装说明	Dimensioni di ingombro Overall dimensions Abmessungen Dimensions d'encombrement Dimensiones generales 全部尺寸				
EF	<table border="1"><tr><td>1SDA066260R1</td><td>1/2 Kit - 3p</td></tr><tr><td>1SDA066261R1</td><td>1/2 Kit - 4p</td></tr></table>	1SDA066260R1	1/2 Kit - 3p	1SDA066261R1	1/2 Kit - 4p	1SDH000719R0817	1SDH000719R0108
1SDA066260R1	1/2 Kit - 3p						
1SDA066261R1	1/2 Kit - 4p						
ES	<table border="1"><tr><td>1SDA066889R1</td><td>1/2 Kit - 3p</td></tr><tr><td>1SDA066890R1</td><td>1/2 Kit - 4p</td></tr></table>	1SDA066889R1	1/2 Kit - 3p	1SDA066890R1	1/2 Kit - 4p	1SDH000719R0805	1SDH000719R0105
1SDA066889R1	1/2 Kit - 3p						
1SDA066890R1	1/2 Kit - 4p						
FC Cu (MCCB)	<table border="1"><tr><td>1SDA066905R1</td><td>1/2 Kit - 3p</td></tr><tr><td>1SDA066906R1</td><td>1/2 Kit - 4p</td></tr></table>	1SDA066905R1	1/2 Kit - 3p	1SDA066906R1	1/2 Kit - 4p	1SDH000719R0807	
1SDA066905R1	1/2 Kit - 3p						
1SDA066906R1	1/2 Kit - 4p						
FC Cu Al 1.5...70mm²	<table border="1"><tr><td>1SDA067151R1</td><td>1/2 Kit - 3p</td></tr><tr><td>1SDA067152R1</td><td>1/2 Kit - 4p</td></tr></table>	1SDA067151R1	1/2 Kit - 3p	1SDA067152R1	1/2 Kit - 4p	1SDH000719R0806	1SDH000719R0106
1SDA067151R1	1/2 Kit - 3p						
1SDA067152R1	1/2 Kit - 4p						
FC Cu Al 35...95mm²	<table border="1"><tr><td>1SDA067155R1</td><td>1/2 Kit - 3p</td></tr><tr><td>1SDA067156R1</td><td>1/2 Kit - 4p</td></tr></table>	1SDA067155R1	1/2 Kit - 3p	1SDA067156R1	1/2 Kit - 4p	1SDH000719R0816	1SDH000719R0127
1SDA067155R1	1/2 Kit - 3p						
1SDA067156R1	1/2 Kit - 4p						
FC Cu Al 120...240mm²	<table border="1"><tr><td>1SDA067159R1</td><td>1/2 Kit - 3p</td></tr><tr><td>1SDA067160R1</td><td>1/2 Kit - 4p</td></tr></table>	1SDA067159R1	1/2 Kit - 3p	1SDA067160R1	1/2 Kit - 4p	1SDH000719R0643	
1SDA067159R1	1/2 Kit - 3p						
1SDA067160R1	1/2 Kit - 4p						
MC Cu Al	<table border="1"><tr><td>1SDA066921R1</td><td>1/2 Kit - 3p</td></tr><tr><td>1SDA066922R1</td><td>1/2 Kit - 4p</td></tr></table>	1SDA066921R1	1/2 Kit - 3p	1SDA066922R1	1/2 Kit - 4p	1SDH000719R0808	1SDH000719R0107
1SDA066921R1	1/2 Kit - 3p						
1SDA066922R1	1/2 Kit - 4p						
HR/VR	<table border="1"><tr><td>1SDA066268R1</td><td>1/2 Kit - 3p</td></tr><tr><td>1SDA066269R1</td><td>1/2 Kit - 4p</td></tr></table>	1SDA066268R1	1/2 Kit - 3p	1SDA066269R1	1/2 Kit - 4p	1SDH000719R0813	1SDH000719R0109
1SDA066268R1	1/2 Kit - 3p						
1SDA066269R1	1/2 Kit - 4p						
R-RC	<table border="1"><tr><td>1SDA066953R1</td><td>1/2 Kit - 4p</td></tr></table>	1SDA066953R1	1/2 Kit - 4p	1SDH000719R0810			
1SDA066953R1	1/2 Kit - 4p						
FB	<table border="1"><tr><td>1SDA066957R1</td><td>1/2 Kit - 3p</td></tr><tr><td>1SDA066958R1</td><td>1/2 Kit - 4p</td></tr></table>	1SDA066957R1	1/2 Kit - 3p	1SDA066958R1	1/2 Kit - 4p	1SDH000719R0814	
1SDA066957R1	1/2 Kit - 3p						
1SDA066958R1	1/2 Kit - 4p						
ADPTER	<table border="1"><tr><td>1SDA066305R1</td><td>1/2 Kit - 3p</td></tr><tr><td>1SDA066306R1</td><td>1/2 Kit - 4p</td></tr></table>	1SDA066305R1	1/2 Kit - 3p	1SDA066306R1	1/2 Kit - 4p	1SDH000719R0902	
1SDA066305R1	1/2 Kit - 3p						
1SDA066306R1	1/2 Kit - 4p						



	A
MCCB	7.5
MCP	6

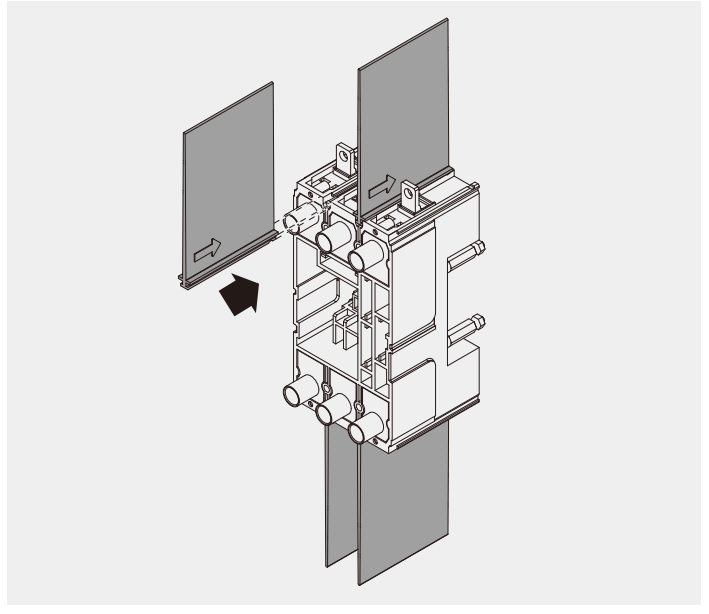
13

ES



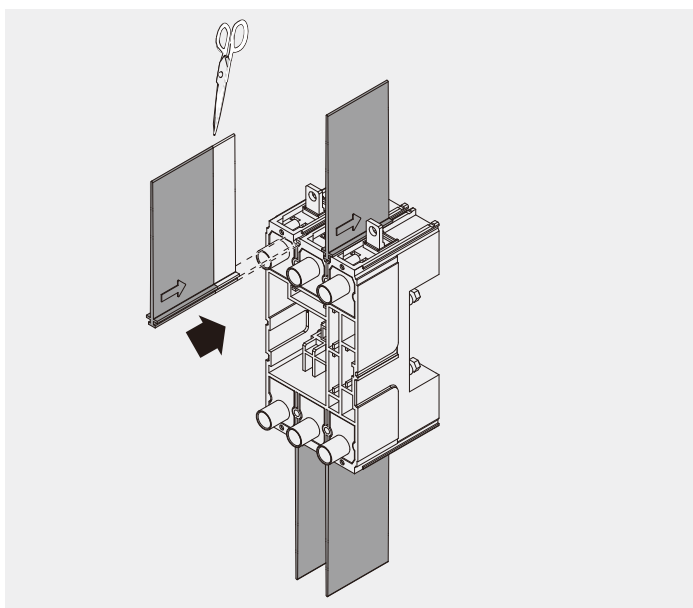
14

P-EF FIXING AT 70MM



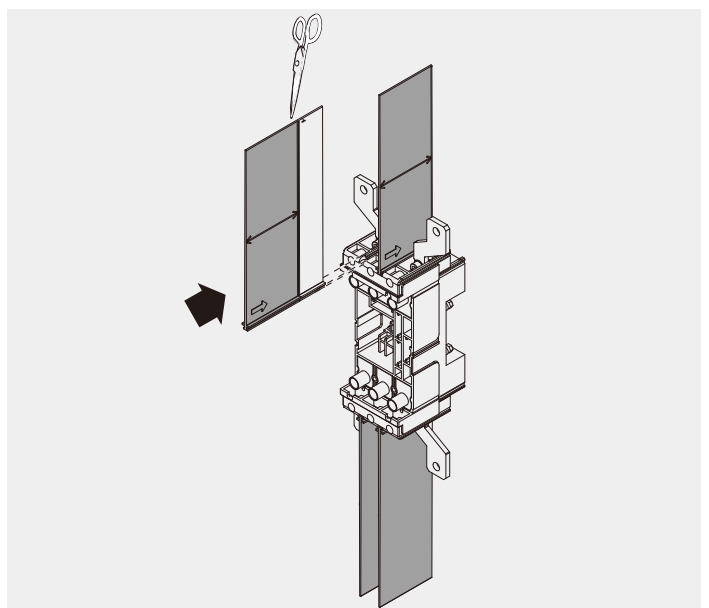
15

P-EF FIXING AT 50MM

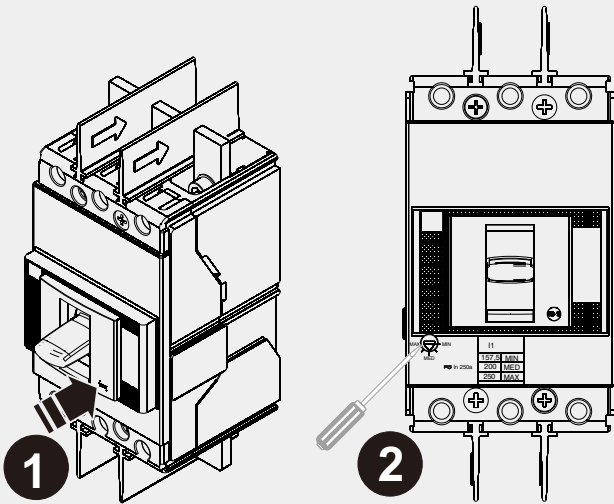


16

P-ES



- E'obbligatorio mettere l'interruttore in posizione Trip test prima di regolare il termomagnetico.
- It is mandatory to turn the circuit breaker to Trip test mode before adjusting the thermomagnetic release.
- Der Leistungsschalter muss vor Einstellung des thermomagnetischen Auslösers zwingend in die Prüfstellung geschaltet werden.
- Il est obligatoire de mettre le disjoncteur en position de Test de Déclenchement avant de régler le déclencheur magnétothermique.
- Es obligatorio situar el interruptor en posición "Test de Disparo" antes de realizar el ajuste del relé termomagnético.
- 调整热磁脱扣器前必须使开关处于跳扣状态



		I1		
TMD	In	MIN (0,7xIn)	MED (0,85xIn)	MAX (1xIn)
	16	11,2	13,6	16,0
	20	14	17	20
	25	17,5	21,3	25
	32	22,4	27,2	32
	40	28	34	40
	50	35	42,5	50
	63	44,1	53,6	63
	80	56	68	80
	100	70	85	100
	125	87,5	106,3	125
160	112	136	160	

		In	I1	I3
TMF	Fixed	16	16	450
	Fixed	20	20	450