

Tmax molded case circuit-breakers

Tmax XT1



Type of circuit-breaker	XT1		
Frame	125		
Poles	3,4		
Rated ultimate short-circuit breaking capacity, I _{cu}	N	S	H
(AC) 50-60 Hz 240 V	[kA] 50	65	100
(AC) 50-60 Hz 480 V	[kA] 25	35	65
(AC) 50-60 Hz 600Y/347 V	[kA] 18	22	25
(AC) 50-60 Hz 600 V	[kA] -	-	-
(DC) 250 V-2 poles in series	[kA] 35	42	50
(DC) 500 V-3 poles in series	[kA] -	-	-
(DC) 500 V-4 poles in series	[kA] 35	50	50
(DC) 600 V-3 poles in series	[kA] -	-	-
Trip units:			
Thermomagnetic	TMF (Fixed threshold)	•	
	TMA (fully adjustable)	-	
Magnetic only	MA (Magnetic only adjustable)	•	
	Ekip LS/I	-	
	Ekip I	-	
Electronic	Ekip LSI	-	
	Ekip LSIG	-	
	Ekip E-LSIG	-	
Versions	Fixed, Plug-in		
Fixing on DIN rail	-		
Operating temperature	-25°C to +70°C		

Compliance with Standards

UL489

CSA C22.2 No. 5

IEC 60947-2

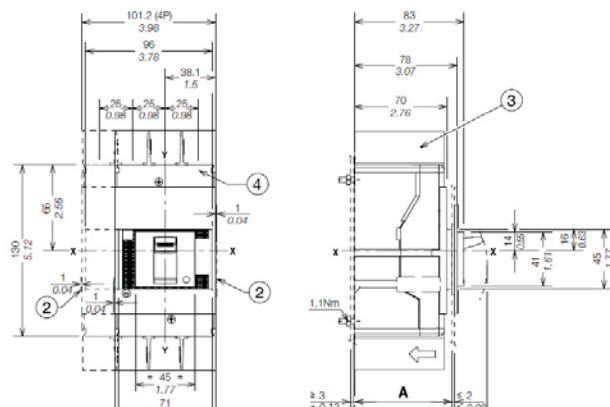
EC Directive:

- "Low voltage directives" (LVD) no. 2006/95/CE

- "Electromagnetic compatibility directive" (EMC) no. 2004/108/CE

Caption

- ① Insulating plate obligatory
- ② Overall dimension of optional wiring ducts
- ③ 25mm insulating barriers between phases (compulsory) provided
- ④ Front carter obligatory for through door of the panel ≤ 25mm/0,98"



Contact us

Canada

ABB Inc.
Low Voltage Products
2117 – 32nd Avenue
Lachine, QC, CANADA H8T 3J1
Tel.: 514-420-3100
Fax: 514-420-3137
Toll Free: 1-800-567-0283

LVP.support@ca.abb.com

While all care has been taken to ensure that the information contained in this publication is correct, no responsibility can be accepted for any inaccuracy. The Company reserves the right to alter or modify the information contained herein at any time in the light of technical or other developments. Technical specifications are valid under normal operating conditions only. The Company does not accept any responsibility for any misuse of the product and cannot be held liable for indirect or consequential damages.

© Copyright 2015 ABB Inc. All rights reserved.

